

**RULES FOR
ARTISTIC SKATING COMPETITIONS
DANCE**

By World Skate Artistic Technical Commission



**WORLD
SKATE**

Index

| | | |
|----------|--|----------|
| 1 | OWNERSHIP | 5 |
| 2 | DANCE – GENERAL DEFINITIONS | 5 |
| 3 | COUPLE DANCE | 5 |
| | 3.1 COMPETITIVE WARM-UP..... | 6 |
| | 3.2 JUNIOR AND SENIOR..... | 6 |
| | Style dance | 6 |
| | Free dance | 7 |
| | 3.3 YOUTH..... | 7 |
| | 3.4 CADET | 7 |
| | 3.5 ESPOIR..... | 7 |
| | 3.6 MINIS..... | 8 |
| | 3.7 TOTS | 8 |
| 4 | TECHNICAL ELEMENTS | 8 |
| | 4.1 COMPULSORY DANCES..... | 8 |
| | Pattern dance sequence..... | 8 |
| | Levels 9 | |
| | 4.2 NO HOLD FOOTWORK SEQUENCE..... | 10 |
| | Levels 10 | |
| | Features..... | 10 |
| | Clarifications | 10 |
| | 4.3 DANCE HOLD FOOTWORK SEQUENCE..... | 11 |
| | Levels 11 | |
| | Features..... | 11 |
| | Clarifications | 11 |
| | 4.4 DANCE LIFTS | 12 |
| | General rules | 12 |
| | Difficult positions..... | 13 |
| | Stationary lifts - levels | 14 |
| | Features..... | 14 |
| | Rotational lifts – levels..... | 14 |
| | Features..... | 14 |
| | Combination lifts - levels | 15 |
| | Features..... | 15 |
| | Choreographic lift | 16 |
| | 4.5 CLUSTERS SEQUENCES..... | 16 |
| | No hold synchronized cluster sequences | 16 |
| | Levels 16 | |
| | Features..... | 16 |
| | Hold clusters sequences | 17 |
| | Levels 17 | |
| | Features..... | 17 |
| | Clarifications for clusters sequences | 17 |
| | 4.6 TRAVELING SEQUENCES..... | 18 |
| | Levels 18 | |
| | Features..... | 18 |
| | Clarifications | 19 |
| | 4.7 CHOREOGRAPHIC POSE | 20 |

| | | |
|----------|--|-----------|
| 5 | LIMITATIONS | 20 |
| 6 | QOE | 21 |
| | Clarifications | 23 |
| 7 | PENALIZATIONS | 23 |
| | 7.1 BY THE REFEREE | 23 |
| | 7.2 BY THE TECHNICAL PANEL | 24 |
| | APPENDIX 1 – RECOGNIZED COUPLE POSITIONS | 25 |
| | APPENDIX 2 – EXAMPLES OF DIFFICULT POSITIONS FOR THE LIFTED PARTNER..... | 26 |
| | APPENDIX 3 – EXAMPLES OF DIFFICULT POSITIONS OF THE LIFTING PARTNER | 27 |
| | APPENDIX 4 – TRAVELING FEATURES EXAMPLES | 28 |
| | APPENDIX 5 - TECHNICAL PANEL ROLES (PROTOCOL) AND GUIDELINES | 31 |
| | TECHNICAL SPECIALIST (TS) | 31 |
| | ASSISTANT (AS) | 31 |
| | CONTROLLER (CTR)..... | 31 |
| | DATA OPERATOR (DO) | 31 |
| | REFEREE (REF)..... | 32 |
| | GENERAL PROCEDURE FOR TECHNICAL PANEL..... | 32 |
| | PRE-CALLS AND CALLS | 32 |
| | Pre-Calls | 32 |
| | Calls 33 | |
| | Pattern dance sequence | 33 |
| | Footwork sequence | 34 |
| | Choreographic sequence / Lift / Pose..... | 35 |
| | Cluster sequence | 35 |
| | Traveling sequence | 35 |
| | Lifts 36 | |
| | REQUEST AND VISUALIZE REVIEWS..... | 36 |
| | Managing the reviews | 36 |
| | Rules to visualize the reviews | 36 |
| | Speed for the reviews..... | 37 |
| | DATA INPUT | 37 |
| | CHECKING AND CONFIRMATION | 37 |
| | SPECIFIC PROCEDURE FOR COMPULSORY DANCE | 38 |
| | SPECIFIC PROCEDURE FOR STYLE AND FREE DANCE | 38 |
| | TECHNICAL SPECIFICATIONS FOR CLUSTER SEQUENCE | 38 |
| | CLUSTER FEATURES..... | 38 |
| | REASONS TO REDUCE THE LEVEL OF THE CLUSTER | 39 |
| | 7.3 CLUSTER SEQUENCE “NO LEVEL” | 39 |
| | TECHNICAL SPECIFICATIONS FOR TRAVELING SEQUENCE | 40 |
| | TRAVELING FEATURES | 40 |
| | REASONS TO REDUCE THE LEVEL OF THE TRAVELING | 40 |
| | 7.4 TRAVELING SEQUENCE “NO LEVEL” | 41 |
| | TECHNICAL SPECIFICATIONS FOR LIFTS | 41 |

| | |
|---|-----------|
| COUNTING THE REVOLUTIONS | 41 |
| LIFTS FEATURES..... | 41 |
| REASONS TO REDUCE THE LEVEL OF THE LIFT..... | 43 |
| LIFT “NO LEVEL” | 43 |
| TECHNICAL SPECIFICATIONS FOR FOOTWORK SEQUENCE..... | 43 |
| TECHNICAL PANEL PROTOCOL DURING THE FOOTWORK SEQUENCE | 43 |
| CONFIRMING TURNS | 44 |
| FOOTWORK FEATURES..... | 44 |
| REASONS TO REDUCE THE LEVEL OF FOOTWORK | 45 |
| FOOTWORK SEQUENCE ‘NO LEVEL’ | 45 |
| PENALIZATIONS..... | 45 |
| MISSING MANDATORY ELEMENT | 45 |
| ILLEGAL ELEMENT | 45 |
| OPENING BEATS | 45 |

1 OWNERSHIP

This document has been written and edited by WORLD SKATE ARTISTIC TECHNICAL COMMISSION, so it cannot be copied.

2 DANCE - general definitions

Timing: all steps, movements, actions must be danced in the timing of the music. For the compulsory dance/ pattern dance it is mandatory to achieve the correct timing to reach the relevant level. Timing faults will bring level down of a minimum of one and will be marked down in the components.

One foot Turns: turns are all the technical difficulties listed and that involve a change of direction on the same foot: traveling (minimum two (2) rotations must be executed quickly and with no edge to be considered as such otherwise will be considered three turns), three, brackets, loops, counters, rockers.

Cluster: sequence of at least three different turns executed on one foot, the three turn will be counted as a turn for the cluster.

Two feet turns: Mohawks, Choctaws. For the Choctaws, the exit edge will be used to define the direction of the turn (e.g. LFI - RBO, the direction will be considered anticlockwise).

Steps: all the technical difficulties that are executed keeping the same direction e.g. chassé, cross chassé, change of edges, cross rolls, cut-step, crosses, runs etc.

Note: half rotation or one rotation jumps on two feet or one foot are not considered a step or a turn.

Ina bauer: it is a technical figure like the spread eagle (inside or outside), during which, the skater executing a frontal split keeps the two feet on different parallel tracings. One of the knees bends while the other is kept extended.

Body movements: the choreographic movements of the arms, bust, head, free leg, must clearly affect the balance of the skater/s to be considered, body movements must be performed during at least three (3) moments of the sequence. At least two parts of the body must be used.

Attitude: free leg stretched in front or behind with respect to the skating foot.

Coupée: free leg bent by the side of the skating leg.

Traveling: multiple continuous rotations (no edge three turns) skated on the same skating foot (minimum two rotations), while the free foot can be in any position. If the rhythm changes, it is not good because it is not a continuous action.

3 COUPLE DANCE

This event shall be conducted for teams consisting of two (2) contestants, one male, one female.

The couple dance competition consists of one style dance and one free dance for Junior and Senior and of compulsory dances and free dance for the other categories.

The two (2) scores for compulsory dances, style dance and free dance will be:

- Technical content.
- Artistic components.

3.1 Competitive warm-Up

- Competitive warm-up shall be considered part of the event. As such, all interruption of skating rules shall apply.
- For Compulsory Dances, Style Dance and Free Dance events, there will normally be no more than six (6) contestant teams assigned to each warm-up group.
- The warm-up for Compulsory Dances is two (2) minutes with music or the length of a track of music. The couples will have ten (10) seconds to roll down the floor and then the compulsory music will be played.
- The warm-up for Style Dance shall be four and a half minutes (4:30).
- In free dance the warm-up time is based upon the skating time allotted if time allows, plus two (2:00) minutes. The announcer shall inform the contestants when one (1:00) minute remains in their warm-up period.
- The next couple to compete will be allowed to use the competition floor during the exhibition of the scores of the previous athletes.
- At the conclusion of the warm-up period the first skater will be allowed up to one (1.0) minute before they have to take the floor.
- For exceptional situations regarding the number of participants and/or time limitations the ATC may decide not to apply this rule.

3.2 Junior and Senior

Style dance

Following are the rules for the style dance.

- The duration of the style dance will be: 3:00 minutes +/- 10 seconds.
- The selection of rhythms used is a minimum of two (2) and a maximum of three (3) different rhythms. The choice of two (2) rhythms may include the use of two different music selections for the same rhythm; however, this may only be done for one (1) of the selected rhythms. The choice of three (3) different rhythms may NOT include the use of two different music selections for the same rhythm.
- One of the selected rhythms must be the rhythm required for the Pattern Dance Sequence. During the Pattern Dance Sequence, a change of music selection is NOT permitted.

Required elements:

The number of required elements in a style dance are four (4). There will be always the pattern dance sequence and the lift, the others will change each year and will be chosen by Artistic Technical Commission between:

1. One (1) no hold footwork sequence, maximum 40 seconds.
2. One (1) hold footwork sequence, maximum 50 seconds.
3. One (1) no hold synchronized cluster sequence, maximum 20 seconds.
4. One (1) hold cluster sequence, maximum 20 seconds.
5. Synchronized traveling sequence.

Fixed elements:

1. One (1) dance lift (the kind of lift will be chosen each year).
2. One (1) pattern dance sequence (compulsory dance).

Note: the first required element performed of each type will be called by the Technical Panel and evaluated by the judges as the required one for the current year.

Free dance

The duration of the free dance will be 3:50 minutes +/- 10 seconds.

World Skate ATC will require seven (7) elements chosen each year from the following:

1. Stationary lift.
2. Rotational lift.
3. Combo lift.
4. Choreographic lift.
5. No hold footwork sequence, maximum 40 seconds.
6. Hold footwork sequence, maximum 50 seconds.
7. No hold synchronized cluster sequence, maximum 20 seconds.
8. Hold cluster sequence, maximum 20 seconds.
9. Synchronized Traveling sequence.

Note: the first required element performed of each type will be called by the Technical Panel and evaluated by the judges as the required one for the current year.

3.3 Youth

1. Two (2) compulsory dances.
2. One (1) free dance of 3:30 minutes +/- 10 seconds.

Set elements that MUST BE included in free dance program are:

- One (1) Dance Hold Footwork Sequence, maximum 50 seconds.
- One (1) Dance NO Hold Footwork Sequence, maximum 40 seconds.
- One (1) Traveling sequence or no hold cluster sequence (maximum 20 seconds). Maximum level 3.
- Two (2) Lifts will be chosen each year by Artistic Technical Commission (selected from: stationary, rotational or combo). Maximum level 4.
- One (1) Choreo lift.

3.4 Cadet

1. Two (2) compulsory dances.
2. One (1) free dance of 3:15 minutes +/- 10 seconds.

Set elements that MUST BE included in free dance program are:

- One (1) Dance Hold Footwork Sequence: maximum level 3, maximum 40 seconds.
- One (1) No Hold Footwork Sequence: maximum level 3, maximum 30 seconds.
- One (1) Traveling sequence. Maximum level 2.
- Two (2) Lifts will be chosen each year by Artistic Technical Commission (selected from: stationary, rotational or combo). Maximum level 3.
- One (1) Choreo lift.

3.5 Espoir

1. Two (2) compulsory dances.
2. One (1) free dance of 3:00 minutes +/- 10 seconds.

Set elements that MUST BE included in free dance program are:

- One (1) Dance Hold Footwork Sequence: maximum level 2, maximum 40 seconds.
- One (1) No Hold Footwork Sequence: maximum level 2, maximum 30 seconds.
- One (1) Traveling sequence. Maximum level 2.
- Two (2) Lifts will be chosen each year by Artistic Technical Commission (selected by: stationary, rotational or combo). Maximum level 2.
- One Choreo lift.

3.6 Minis

1. Two (2) compulsory dances.
2. One (1) free dance of 2:30 minutes +/- 10 seconds.

Set elements that MUST BE included in free dance program are:

- One (1) Dance Hold Footwork Sequence: maximum level 1, maximum 40 seconds.
- One (1) Dance No Hold Footwork Sequence: maximum level 1, maximum 30 seconds.
- One (1) Traveling sequence. Maximum level 1.
- One (1) Choreo lift.

3.7 Tots

One (1) free dance of 2:00 minutes +/- 10 seconds.

Set elements that MUST BE included in free dance program are:

- One (1) Dance Hold Footwork Sequence: maximum level 1. The four (4) steps and turns that will be counted towards the level are: Cross in front, Inside Three Turn, Outside Three turn, Open Mohawk, maximum 40 seconds.
- One (1) Dance No Hold Footwork Sequence: maximum level 1. The four (4) steps that will be counted towards the level are: Cross in front, Inside Three Turn, Outside Three turn, Open Mohawk, maximum 30 seconds.
- Two (2) Choreo poses (same value as Choreo Lifts).

4 TECHNICAL ELEMENTS

In the program element content sheet, it is mandatory to write the start time of each element.

4.1 Compulsory dances

Please refer to World Skate artistic Dance and Solo Dance Manual 2021 for compulsory dance specifications.

The number of opening beats to be used for all dances must not exceed 24 beats of music, if this happens 0.5 point penalization will be applied.

During the competitions, the three (3) tracks of each dance must be used.

Pattern dance sequence

This element consists of one (1) sequence of a complete compulsory dance selected by World Skate Artistic Technical Commission, that covers the entire surface of the skating floor, or two (2) sequences of a complete compulsory dance with a pattern that covers half of the skating floor.

General rules

- Must adhere to the diagram/pattern provided by World Skate ATC.
- The BPM of the piece of music selected for the Pattern Dance Sequence inserted in the Style Dance may vary from that required, within a range of +2 / -2 BPM.

For example: *in compulsory dances with a required tempo of 100 BPM, the number of beats may be, for the duration of the pattern dance sequence, from a minimum of 98 to a maximum of 102 BPM.*

There can be an introduction before the beginning of the pattern dance sequence, and also after the end of the pattern dance sequence, during which the tempo of the piece of music is free, but whilst skating the actual pattern dance sequence the music must keep

the same range +/- 2 from the required bpm. Once the bpm for the pattern dance sequence is decided it MUST remain constant for the entirety of the pattern dance sequence.

For example: A piece of waltz music has an introduction with a tempo of 148 BPM; but during the skating of the Starlight Waltz the tempo must be within the range of 166 to 170 BPM (168 BPM +/- 2); remaining constant throughout the sequence; and after the pattern dance sequence is completed the tempo changes to 128 BPM.

It is mandatory to present, before the Dance competition, a certification from a teacher of music that confirms:

- The rhythms used.
- The number of BPM of the Pattern Dance Sequence(s).
- It should be specified when the music for the compulsory dance starts and when it finishes.

If in the event that these rules are not observed, World Skate ATC shall give a deduction of 1.0 from the total score.

- Must begin with step one (1) of the dance pattern placed to the left of the judges (or as required annually by request of World Skate ATC) and finish with the first step of the dance (step 1) required by the rules.
- Must maintain the same steps/recognized positions*/holds of the dance and respect the required timing of each step.

* A **recognized position** is defined by the hold of the man's right arm/hand with respect to the woman (or by the man's left arm/hand for Reverse Kilian position), and by the position of the skaters with respect to each other. The recognized positions and holds required by the rules may include choreographic movements of the upper body (with the other arm free from hold) to make the performance of the dance more relevant to the required rhythm while respecting the wording of the dance descriptions (see compulsory dance rules) and without changing the nature of the required movements/steps/holds.

Levels

For the pattern dance sequence in the style dance and for the compulsory dances for Youth, Cadet, Espoir and Minis, there will be five (5) levels depending how the key points have been executed. If the compulsory dance requests two (2) sequences, the levels will be applied twice, once for each sequence.

| LEVEL | SEQUENCE / SECTION | INTERRUPTION TIME | KEY POINTS |
|-------|--------------------|----------------------|------------|
| Base | 75% | / | / |
| 1 | 100% | No more than 4 beats | 1 |
| 2 | 100% | No more than 4 beats | 2 |
| 3 | 100% | Not interrupted | 3 |
| 4 | 100% | Not interrupted | 4 |

- Level Base - 75% of sequence/section is completed by both partners.
- Level 1 - sequence/section is not interrupted more than four (4) beats in total, either through stumbles, falls or any other reason AND one (1) key point is correctly executed.

- Level 2 - sequence/section is not interrupted more than four (4) beats in total, either through stumbles, falls or any other reason AND two (2) key points are correctly executed.
- Level 3 - sequence/section is not interrupted at all, either through stumbles, falls or any other reason AND three (3) key points are correctly executed.
- Level 4 - sequence/section is not interrupted at all, either through stumbles, falls or any other reason AND four (4) key points are correctly executed.

Timing faults will bring the level down a minimum of one and will be marked down in the components.

If less than 75% of the sequence is completed by both partners, the call by the Technical Panel will be 'No Level'.

If the compulsory sequence is missed or not completed, it will be called "No Level" with no other penalty, however the components would not score highly.

If the dance is skated in the incorrect hold for the whole pattern the call by the Technical Panel will be 'No level'.

4.2 No hold footwork sequence

Base level requirements:

- Skaters must include steps/linking steps.
- The pattern is free, it must cover at least $\frac{3}{4}$ of the length of the rink. It has a time limit depending on the category.
- ~~It MUST start from the short side of the rink and it must arrive on the opposite short side of the rink.~~

Levels

| Level Base - NoHB | Level 1 - NoH1 | Level 2 - NoH2 | Level 3 - NoH3 | Level 4 - NoH4 |
|---|---|--|---|---|
| A footwork sequence that meets the basic requirements and calling specifications. | Level B AND must perform 4 turns and must include one (1) feature (chosen between feature 1 or 2 only). | Level B AND must perform 6 turns and must include two (2) different features (one of them must be feature 1 or 2). | Level B AND must perform 8 turns and must include three (3) different features. | Level B AND must perform 10 turns and must include four (4) different features. |

Features

1. **Body movements:** three (3) different body movements by both skaters are required; they must be from different groups.
2. **Choctaws:** skaters must add two (2) choctaws, one clockwise and the other anti-clockwise. Only Choctaws from forwards to backwards will be considered.
3. **Cluster:** to be considered as a feature, both partners must perform a cluster where three (3) of the turns presented in the cluster must be confirmed.
4. **Turns on different feet:** turns confirmed required for the level must be presented both on the right foot and on the left foot, or clockwise and anti-clockwise for loops and travelings. They must be evenly distributed between the left foot/anti-clockwise and the right foot/clockwise. See Clarifications.

Clarifications

- Turns to be confirmed and counted for the level must be executed correctly and show clear edges before and after the change of direction and cusps must be clear. Jumped turns, turns executed on the spot or turns where the skater puts the free leg on the floor will not be counted. Each type of turn can only be counted twice.

- Three turns are considered a turn for the cluster but not as a turn to be counted for the level.
- For feature number 1: **Body movements should be distributed throughout the sequence with steps/turns in between. Body movements presented one after another will be counted as only one movement.** body movements performed at the beginning or at the end of the sequence while the skater/s are not skating, will not be counted.
- Stops and go (less than 3 seconds) are permitted if they need to characterize the music.
- For feature number 4: loops and traveling performed on either foot in an anticlockwise direction will be considered left foot execution and loops and traveling performed on either foot in a clockwise direction will be considered right foot execution for the purpose of counting turns on different feet. It is not mandatory to perform the same type of turns in both directions, or with both feet to be considered towards the level.
- **If the skater presents more than one extra turn than required for the maximum level of the category the level will be reduced by one (1).**
- **The skaters can present as many features as they like.**

4.3 Dance hold footwork sequence

Base level requirements:

- Skaters must include steps/linking steps.
- Skaters must be in hold.
- The pattern is free, it must cover at least $\frac{3}{4}$ **of the length** of the rink. It has time limit depending on the category.
- ~~It MUST start from the short side of the rink and it must arrive on the opposite short side of the rink.~~
- The couple must perform a minimum of two (2) different recognized dance positions*.

*Appendix 1 - Recognized dance positions.

Levels

| Level Base - HoB | Level 1 - Ho1 | Level 2 - Ho2 | Level 3 - Ho3 | Level 4 - Ho4 |
|---|---|--|---|--|
| A footwork sequence that meets the basic requirements and calling specifications. | Level B AND must perform 4 turns and must include one (1) feature (chosen between feature 1 or 2 only). | Level B AND must perform 6 turns and must include two (2) different features and three (3) different holds. (one of them must be feature 1 or 2). | Level B AND must perform 8 turns and must include three (3) different features and three (3) different holds. | Level B AND must perform 10 turns and must include four (4) different features and four (4) different holds. |

Features

1. **Body movements:** three (3) **different** body movements **by both skaters** are required; **they must be from different groups.**
2. **Choctaws:** skaters must add two (2) choctaws, one clockwise and the other anti-clockwise. Only Choctaws from forwards to backwards will be considered
3. **Cluster:** to be considered as a feature, **both partners must perform a cluster where the three (3) of the** turns presented in the cluster must be confirmed.
4. **Turns on different feet:** turns **confirmed** required for the level must be presented both on the right foot and on the left foot, or clockwise and anti-clockwise for loops and travelings. They must be evenly distributed between the left foot/anti-clockwise and the right foot/clockwise. See Clarifications.

Clarifications

- Clarifications for 'No Hold footwork sequence' apply.
- The turns can be executed simultaneously or not. To be evaluated by the technical panel, turns must be executed while the couple is in hold (not during the quick change of position where the couple is in no hold position) except for traveling and loops that, can be performed during the quick changes of position and can be counted as turns towards the level e.g:
 - Both of the partners execute travelings or loops;
 - One partner executes a mohawk (two feet turn) the other the loop or the traveling.
- To call the dance positions skaters must perform at least one turn while in the position (the other skater can perform any other step).
- During the cluster only the first dance hold will be taken into consideration in counting the dance holds towards the level.
- Stops and go (less than 3 seconds) are permitted if they need to characterize the music.
- The release of contact is permitted only for quick changes of hold/position and for the execution of traveling and loops (regardless if they are executed at the same time or not).
- The position "hand in hand" is not considered a recognized position.
- Kilian and Kilian Reverse must be considered two different holds.
- The change of position must be:
 - Switching between recognized positions: this happens when the couple changes from a recognized position to another recognized position and during this change one of the partners changes the direction. E.g. Kilian to Waltz, Waltz to Foxtrot, Tango to Tandem etc.
Note: it will not be considered a change of position the transition Kilian to Foxtrot (positions with skaters both side by side and with the same direction) or Waltz to Tango (positions with partners in the opposite direction to each other where they both remain on the same direction).
 - Pass through positions coded: this happens when a couple uses not recognized "creative positions" before assuming a recognized position. In such changes of positions, it is not necessary to have a change of direction.

Note: turns executed during the dance hold footwork sequence can be the same between the two skaters (e.g. 2 brackets and 2 rockers), or different (e.g. one skater executes a turn and the other a step).

4.4 Dance lifts

Kinds of lifts:

- Stationary position.
- Rotational.
- Combination: stationary position + rotational.
- Choreographic.

For all the lifts, the maximum time allowed is ten (10) seconds, except for the combination lift to which the maximum time allowed is fifteen (15) seconds.

It is not allowed to execute lifts at the beginning of the program when the lifted partner is already lifted or finish with a lift where the lifted partner does not exit the lift.

General rules

- The sustaining partner's hands may go above their own head as long as the hips of the lifted partner remain below the sustaining partner's head.
- The lifted partner's hips may go above the sustaining partner's head as long as the sustaining partner's hands do not go above their own head.

- A dance lift occurs when the partner is lifted in the air for at least two (2) seconds (less than two (2) seconds is not considered a lift).
- Each type of difficult position/entry, both for the lifting partner and the lifted partner, will be considered just once in the same lift and in the same program.
- **If the skaters present more features than required for the maximum level of the category the level will be reduced by one (1).**

Difficult positions

Difficult position for the lifted partner

- Full split:** when the legs are spread and extended at a straight angle (180°). Supports are free. **The position must be held without the help of the lifting partner.**
- Full biellmann:** position for the lifted partner, the heel of the skate (sustained by the hands (2 or 1) brought behind the bust (on the sagittal plane) and at the same level as the head or above the head. Supports are free. The position must be held without the help of the lifting partner. The free leg and the back should be at less than 90°.
- Full ring:** the upper body is arched backward with one or both heels close to the head (describing a complete circle). Supports are free. The position must be held without the help of the lifting partner.
- Head upside down:** upside down vertical position for the lifted partner with the head close to the rink. **The head of the lifted partner must be lower than the hips of the lifting partner.** Total supports maximum three (3). **Torso is not to be used as a support.**
- Cantilever:** the position of the lifted partner is vertical/oblique and cantilevered out: the lifted partner is extended away from the lifting partner. Total supports maximum two (2).
- Balancing:** horizontal position of either lifting or lifted partner. The final position of the two partners should be reached with the centre of gravity situated far from the skating foot of the lifting partner. Total supports maximum two (2).
- Leg Lift:** one point of support must be one leg (from the hips to the foot). Total supports maximum two (2) including the support on the leg.
- Layback:** the lifted partner is in a supine position (defined by the position of the hips, torso and chest facing upwards while the back is arched) without being supported by the lifting partner above the thigh. Maximum two (2) points of contact allowed.
- Shoulder back:** horizontal position of the lifted partner with just one support given by one shoulder of the lifting partner.

Appendix 2 - Examples difficult positions for the lifted partner.

When to consider a change of position of the lifted partner

- The lifted partner changes hold and position in a significant way.
- The change of hold and position are executed at the same time.
- Different positions must be clear and defined.

Change of hold means that the contact area is different.

Examples: holding with the legs to hold with arms (or vice versa); holding with one arm to hold with the opposite arm.

Different position means the body pose and the body axis change in a significant way. Merely changing the position of arm(s) and/or leg(s) do not constitute a “Change of Position” feature.

Example: the woman changes the plane of the body axis (vertical to horizontal or vice-versa).

Difficult position of the lifting partner

- One foot (**For rotational: one revolution**).
- Outside, inside or flat spread eagles.

- c. In a bauer inside and outside.
 - d. Bended (sit position) 90° / complete squat.
 - e. One or no contact arm/hand.
- Appendix 3 - Examples of difficult positions of the lifting partner.

Creative/difficult entry

- a. Unexpected entry. From an acrobatic movement.
- b. Difficult transition: from a turn (one foot or choctaw).
- c. Assisted Jump: a minimum ½ rotation assisted jump upon Body Axis (vertical/oblique/horizontal) landing on the lifting partner.
- d. Rotation: minimum one (1) rotation on the sagittal plane or on the horizontal one, supported by the the lifting partner.

Stationary lifts - levels

Base level requirements:

The lifting partner will not perform any rotation and the lifted partner will stay in a stationary position for at least three (3) seconds. Seconds will start from the definition of the position of the lifted partner. The lifting partner is allowed to do a half rotation to enter the lift and a half rotation to exit. The maximum time allowed for the execution of the stationary lift is ten (10) seconds.

| Level Base - StLiB | Level 1 - StLi1 | Level 2 - StLi2 | Level 3 - StLi3 | Level 4 - StLi4 |
|---|---|--|--|---|
| A Stationary Lift that meets the basic requirements and calling specifications. | Level B and must include one (1) feature. | Level B and must include two (2) features. | Level B and must include three (3) features. | Level B and must include four (4) features. |

Features

1. **Change of position:** each position must be held for at least two (2) seconds.
2. **Difficult entry:** to be considered, it must immediately precede the lift, so it challenges and makes the lift more difficult. If there is a long hesitation or delay in reaching the peak position of the lift, ~~the level will be lowered by one (1).~~ the feature will not be considered.
3. **Difficult position of the lifting partner:** it must be kept for at least two (2) seconds in a position if presented with feature number one (1), or three (3) seconds if presented in a one position lift.
4. **Difficult position of the lifted partner:** it must be kept for at least two (2) seconds in a position if presented with feature number one (1), or three (3) seconds if presented in a one position lift.

Rotational lifts - levels

Base level requirements:

One rotational lift of at least three (3) revolutions of the lifting partner and the lifted partner must be in one position for at least two (2) rotations. The maximum time allowed for the execution of the rotational lift is ten (10) seconds.

| Level Base - RtLiB | Level 1 - RtLi1 | Level 2 - RtLi2 | Level 3 - RtLi3 | Level 4 - RtLi4 |
|---|---|--|--|---|
| A Rotational Lift that meets the basic requirements and calling specifications. | Level B and must include one (1) feature. | Level B and must include two (2) features. | Level B and must include three (3) features. | Level B and must include four (4) features. |

Features

1. **Change of position:** each position must be held for at least for two (2) revolutions. The total number of revolutions should be more than four (4).
2. **Difficult entry:** to be considered, it must immediately precede the lift, so it challenges and makes the lift more difficult. If there is a long hesitation or delay in reaching the peak position of the lift, the feature will not be considered.
3. **Difficult position of the lifting partner:** it must be kept for at least two (2) revolutions in a position if presented with feature number one (1), or three (3) revolutions if presented in a one position lift.
4. **Difficult position of the lifted partner:** it must be kept for at least two (2) revolutions in a position if presented with feature number one (1), or three (3) revolutions if presented in a one position lift.
5. **Number of revolutions:** six (6) revolutions for the lifting partner. The half revolution in the exit will not be considered part of the revolutions.

Combination lifts - levels

This lift is a combination of a stationary lift and a rotational lift.

It is allowed for the lifting partner to do a half rotation to enter and a half rotation to exit the lift.

Base level requirements:

A lift with one (1) stationary position held for two (2) seconds combined with a rotational lift of three (3) revolutions of the lifting partner. The maximum time allowed for the execution of the combination lift is fifteen (15) seconds.

| Level Base - CliLiB | Level 1 - CliLi1 | Level 2 - CliLi2 | Level 3 - CliLi3 | Level 4 - CliLi4 |
|--|---|---|--|---|
| A Combo Lift that meets the basic requirements and calling specifications. | Level B and must include one (1) feature. | Level B and must include two (2) features and three (3) revolutions by the lifting partner in the rotational. | Level B and must include three (3) features and four (4) revolutions by the lifting partner in the rotational. | Level B and must include four (4) features and five (5) revolutions by the lifting partner in the rotational. |

Features

1. **Change of position:** each position must be held for at least for two (2) revolutions if executed in the rotational or two (2) seconds if executed in the stationary. **Note: the two (2) stationary positions do not have to be in succession, example: stationary 1 - rotational - stationary 2. The COP between the stationary and rotational parts will not be considered as this is a mandatory change of position. The COP feature will be called only WITHIN the stationary part or WITHIN the rotational part.**
2. **Difficult entry:** to be considered, it must immediately precede the lift, so it challenges and makes the lift more difficult. If there is a long hesitation or delay in reaching the peak position of the lift, the feature will not be considered.
3. **Difficult position of the lifting partner:** if presented in the rotational part, it must be kept for one rotation less than the number of rotations required for the level, unless presented with feature 1 in which case the difficult position must be kept for at least two (2) revolutions; if presented in the stationary part, it must be kept for two (2) seconds if presented with feature (1), three (3) seconds otherwise.
4. **Difficult position of the lifted partner:** if presented in the rotational part, it must be kept for one rotation less than the number of rotations required for the level, unless presented with feature 1 in which case the difficult position must be kept for at least two (2) revolutions; if presented in the stationary part, it must be kept for two (2) seconds in the stationary part if presented with feature (1), three (3) seconds otherwise.

Choreographic lift

The choreographic lift will have a set value of two (2) points (there are no levels). Judges will give their QOE based on the characteristics listed in the table (refer to section 6. QOE).

- The choreographic lift will be inserted to enhance or underline a part of the choreography.
- **The lift must be done in movement across the floor, not in stationary or stopped position.**
- It cannot last more than ten (10) seconds.
- Supports are free.

4.5 Clusters sequences

No hold synchronized cluster sequences

Base level no hold cluster requirements:

- The couple must introduce two (2) set of clusters separated by a maximum of four (4) dance steps or two feet turns (no one foot turns).
- The sets **MUST** be the same for both partners. The skaters have not to be in hold but skating alone. They should be as close as possible, and they are free to use whatever turn they want (except for where the choice of formation requires otherwise. For example, if the couple performs a cluster sequence in mirror image of each other).
- The cluster has a time limit depending on the category.
- Each set must start with at least three (3) different turns.
- Both sets must be different: it is possible to use the same turns in each set but in a different order.
- For Base Level the presentation of the element with the above requirements is mandatory, even if the turns are not confirmed.
- If the skaters, after the second set remain in a no hold position before the following element, it will be considered one of the separations allowed by the referee as per the separation rules.

Levels

| Level Base - CISqB | Level 1 - CISq1 | Level 2 - CISq2 | Level 3 - CISq3 | Level 4 - CISq4 |
|--|---|--|--|--|
| A cluster sequence that meets the basic requirements and calling specifications. Maximum 15 seconds. | Level B and must include one (1) feature. Maximum 15 seconds. | Level B AND one of the sets must perform 4 turns and must include one (1) feature. Maximum 20 seconds. | Level B AND the skater must perform 4 turns in the two sets and must include two (2) different features. Maximum 20 seconds. | Level B AND the skater must perform 4 turns in the two sets and must include three (3) different features. Maximum 20 seconds. |

Features

1. **Difficult entries in both sets.**
 - a. Difficult entries can be: Choctaw, Ina Bauer (using a minimum of six (6) wheels), Spread Eagle, Jump of $\frac{1}{2}$ rotation or one (1) complete rotation.
 - b. The ~~two~~ difficult entries **for each set** must be different.
 - c. Only Choctaws from forwards to backwards will be considered.
2. **Body movements:** skaters must present two (2) body movements: one body movement in the first set and one body movement in the second set. The two (2) body movements must be **from different groups. They cannot be executed at the end or at the beginning of the sets they must be executed during or between the turns.**
3. **Different feet:** one set must be executed on the right foot and one set on the left foot.

Hold clusters sequences

Base Level Hold Cluster requirements:

- The couple must introduce two (2) set of clusters separated by a maximum of four (4) dance steps or two feet turns (no one foot turns). Each set must be of at least three (3) turns.
- The cluster has a time limit depending on the category.
- The couple can never break the hold during the execution of the sequences, the holds can be recognized or not.
- Each set must start with at least three (3) different turns.
- Partners can execute different turns within the set or the same turns.
- It is allowed for the couple to execute the four steps between the sets in a no hold position however, before the first turn of the second sequence, they must be in dance hold.
- Both sets must be different: it is possible to use the same turns in the sets but in a different order.
- For Base level the presentation of the element with the above requirements is mandatory, even if the turns are not confirmed.

Levels

| Level Base - HCISqB | Level 1 - HCISq1 | Level 2 - HCISq2 | Level 3 - HCISq3 | Level 4 - HCISq4 |
|--|---|--|---|---|
| A cluster sequence that meets the basic requirements and calling specifications. Maximum 15 seconds. | Level B and must include one (1) feature. Maximum 15 seconds. | Level B AND in one of the sets the skater must perform 4 turns and must include one (1) feature. Maximum 20 seconds. | Level B AND the skater must perform 4 turns in both sets and must include two (2) different features. Maximum 20 seconds. | Level B AND the skater must perform 4 turns in both sets and must include three (3) different features. Maximum 20 seconds. |

Features

1. **Difficult entries in both sets.**
 - a. Difficult entries can be: Choctaw, Ina Bauer (using a minimum of six (6) wheels), Spread Eagle, Assisted Jump.
 - b. The difficult entries **for each set** must be different.
 - c. Only Choctaws from forwards to backwards will be considered.
2. **Different feet:** one set must be executed on the right foot and one set on the left foot.
3. **Loops or Travelings.**
 - a. The couple need to introduce a minimum of one loop or one traveling in each set of the cluster.
 - b. As a minimum, in one set a loop or traveling will be performed by the man and in one set a loop or traveling will be performed by the lady.

Clarifications for clusters sequences

- If a loss of control with additional support (touch down by free leg/foot and/or hand/s) occurs after the cluster has started and the execution of the element continues after the touch down, only the part before the touch down will be considered for the level.
- No change of edge is allowed in the first three turns of the cluster.
- If the skater/s executes more turns than required for the maximum level of the category, the level will be lowered by 1.
- **The skaters can present as many features as they like.**

For difficult entries:

- The difficult entries must precede immediately the first turn of the set. In the second sequence, the difficult entry must be the step preceding the first turn of the second

sequence and will be counted as the final of the four steps allowed. The difficult entries will be considered as part of the time limit.

- ~~If a skater chooses to perform a difficult entry followed by a body movement a change of edge is allowed just before or during the execution of the body movement, however the edge taken at the completion of the body movement must be the edge of the first turn of the cluster. The body movement should follow immediately from the difficulty entry and immediately precede the first turn of the cluster for the difficult entry to be considered.~~
- The two partners must execute the same difficult entries for no hold cluster, however for the hold cluster they may be different.
- Spread Eagles/Ina Bauer as difficult entries must maintain the characteristics of the step until the entry of the first turn of the set, otherwise the feature will not be considered. It is not possible to execute a change of edge before the first turn.
- Jumps. They must be very clear to be considered as difficult entries and the turns of the set must begin immediately after the edge is taken.

4.6 Traveling sequences

Base level traveling requirements:

- Two (2) sets of a minimum of two (2) rotations with a maximum of three (3) steps or turns in between.
- Maximum duration of the traveling is ten (10) seconds.

Levels

| Level Base - TrB | Level 1 - Tr1 | Level 2 - Tr2 | Level 3 - Tr3 | Level 4 - Tr4 |
|--|---|--|---|--|
| A traveling sequence that meets the basic requirements and calling specifications. | Level B and must include one (1) feature. | Level B AND each set must be of three (3) rotations and must include two (2) features from two different groups. One of the sets must be in different direction. | Level B AND each set must be of three (3) rotations and must include three (3) features, from three different groups. One of the sets must be in different direction. | Level B AND each set must be of four (4) rotations and must include four (4) features. At least three of the four features must be taken from different groups. One of them must be an extra feature. One of the sets must be in different direction. |

Features

Group 1

- Difficult entry **first set of the** in the element:
 - Spread Eagles/Ina Bauer (minimum of 6 wheels): it is not allowed to change the edge before starting rotation and the characteristics must be maintained until the entry of the first set;
 - Jump must be of minimum ½ revolution (180°) - maximum 1 revolution (360°): landing edge must be entry edge to the traveling;
 - Choctaw: only Choctaws from forwards to backwards will be considered. it is not allowed to change the edge before starting rotation.
 - Turns: rocker or counter: it is not allowed to change the edge before starting rotation.**
- Set of travelings performed side by side with the two skaters rotating in opposite directions (mirror).
- Extra feature:** Third traveling set.
 - Must be of minimum three (3) rotations maximum four (4).
 - Must be executed within the ten (10) seconds allowed.
 - Before the third traveling a maximum of three (3) steps or turns in between can be performed.

- iv. Features from Group 2 or Group 3 can be presented during the third set of traveling. One of these additional features may be included in the features to get the level.

Group 2

- a. Elbow(s) at least level with or higher than the shoulder (hand(s) could be above the head, at the same level as the head, or lower than the head).
- b. Significant continuous motion of arms during required number of rotations.
- c. **Extra feature:** Core of body is shifted off of vertical axis or torso twisted at least 45 degrees.
- d. Clapsed hands behind the back and far from it.
- e. Arms, one behind and the other in front like a screw.
- f. Straight arms clapsed in front & extended away from the body (between the waist and chest level and lower than the level of shoulder).

Group 3

- a. Free leg crossed in front or behind under the knee line (pirouettes).
- b. Free skate wheels held by one or two hands.
- c. High free leg stretched lateral or forward (at least 45 degree angle from the vertical).
- d. **Extra feature:** Changing the level of the skating leg (knee) with a continuous wave (up/down) motion.

Clarifications

- If one (1) of the sets is not correct (e.g. evident execution of three turns) but the rotations and/or features have been performed, the traveling sequence will be called with one (1) level less (e.g. if it was a level 3, it will be called level 2). If two (2) of the sets are executed with clear three turns then the level will be no higher than Level Base.
- If the skater falls or there is any interruption or a loss of control with additional support (touch down by free leg/foot and/or hand/s) during the entry, the execution of the sequence or immediately after either set, the element is called for what has been done before the interruption or the fall. It will have a no level if the features of level base are not fulfilled.
- If there are more than three (3) steps/turns between the sets, the level shall be reduced by one (1).
- The rotations of the traveling should be fast and demonstrate ability to keep control of the body axis.
- If the skater executes more revolutions than required by the maximum level of their category, the turns in excess will be considered in counting the three steps/turns they are allowed in between the two sets. $\frac{1}{2}$ a revolution in excess is accepted as an **entry into each set to reach the position of the feature**. In the second set, **or the last set if the feature 1c is executed, $\frac{1}{2}$ a revolution in excess is accepted as an exit from the element, if the excess is more than this, the level will be reduced by one (1) for each added turn.**
- **Pushing with toe-stop or stopping during the three steps-turns allowed in between sets is not allowed and would result in the level being lowered by one (1).**
- **Skaters can use the first half revolution to reach the position required by a feature; this half revolution will be counted on the total number of revolutions.**
- Features should be performed correctly and for the entirety of the set to be considered and must be different to be counted to the level.
- The features turns and connecting steps will be timed as part of the allowed time. All the features and turns done after the maximum time is reached will not be counted for the level.
- **If the skater executes more features from different groups than required for the maximum level of the category the level will be reduced by one (1). For Example: the**

skaters can present more than one feature from the same group as it will not be considered for the level. For example: Level 2, the skater can perform two features from group 1 and one feature from group 2.

4.7 Choreographic pose

The Choreographic pose is a held position of the couple that creates an interesting or artistic design in space.

The choreographic pose will have a set value of two (2) points (there are no levels). Judges will give their QOE based on the characteristics listed in the table (refer to section 6. QOE).

- The choreographic pose will be inserted to enhance or underline a part of the choreography.
- It cannot last more than five (5) seconds.
- Supports are free.

5 LIMITATIONS

Dance lifts: no additional lift is permitted.

Dance spin: a maximum of one (1) dance spin, done in hold with a minimum of two (2) rotations. Less than two (2) rotations is not considered a spin. Lifted spins are not permitted. **Spins are not allowed in the footwork sequence.**

Dance jumps: a maximum of two (2) jumps (each skater) of one (1) rotation each (no more than one rotation in the air). Jumps shall not be considered as elements of technical value. The required jumps used as features of the technical elements will be counted in the two (2) allowed. **Jumps are not allowed in the footwork sequence.**

Stop: a stop is considered when at least one of the skaters is stopped for more than three (3) seconds up to maximum of eight (8) seconds. A maximum of two (2) stops may be executed during the program for a minimum of three (3) seconds to a maximum of eight (8) seconds each for a maximum allowed distance of separation of four (4) meters (excluding the beginning and the end).

Stationary positions: kneeling/lying down on the floor is permitted only two (2) times during the entire program for a maximum of five (5) seconds each (including the beginning and end).

If both partners are on the floor at the same time, it shall be considered as once. Hands on the floor (i.e. a cartwheel) shall not be considered as a laydown. Stationary positions shall not be considered as elements of technical value, but of artistic value.

Beginning and end of the program: the skaters may not exceed eight (8) seconds of being stopped.

Separations permitted:

- At the beginning and the end of the program for a maximum time of eight (8) seconds.
- During the stop where the separation is for a maximum of eight (8) seconds and for a maximum distance of four (4) meters between the partners
- **Style dance:** for only one (1) time during the program, while skating, (for characteristic steps/technical difficulties) for a maximum of eight (8) seconds and with a maximum distance of four (4) meters between the partners (except where prohibited by the rules).
- **Free dance:** for only two (2) times during the program, while skating, (for characteristic steps/technical difficulties) for a maximum of eight (8) seconds and with a maximum distance of four (4) meters between them.
- For quick changes of position/hold between the partners during the entire program.

6 QOE

Judges will score each technical element with the QOE and will give from -3 to +3 taking into consideration the following guidelines for each technical element.

| ASPECTS | VERY POOR | POOR | MEDIOCRE | ACCEPTABLE | GOOD | VERY GOOD | OUTSTANDING/ EXCELLENT |
|--|--|---|--|---|---|--|--|
| SEQUENCES/ SECTIONS OF COMPULSORY/ PATTERN DANCE | -3 | -2 | -1 | Base | +1 | +2 | +3 |
| Quality/correctness of edges/steps/turns for the whole pattern dance element | 40% or less clean edges/steps/turns with many errors | 50% clean edges/steps / turns with 2 major errors | 60% clean edges/steps / turns with 1 major error | 75% clean edges/steps / turns with no major error | 80% clean edges/steps/turns with no major error | 90% clean edges/step/turns with no major error | 100% clean edges/step/turns |
| Depth of edges | Very flat | Generally flat | Some flats | Shallow | Good curves | Deep | Very deep |
| Correct holds | 40% | 50% | 60% | 75% | 80% | 90% | 100% |
| Correct tracking, restart and its repetition | 40% | 50% | 60% | 75% | 80% | 90% | 100% |
| Timing | 40% or less | 50% clean | 60% clean | 75% clean | 80% clean | 90% clean | 100% |
| ASPECTS | VERY POOR | POOR | MEDIOCRE | ACCEPTABLE | GOOD | VERY GOOD | OUTSTANDING/ EXCELLENT |
| DANCE LIFTS | -3 | -2 | -1 | Base | +1 | +2 | +3 |
| Entry/exit | Shaky/dropped | Fumbling | Hesitant/abrupt | Sure/ solid | Smooth | Flowing | Seamless |
| Ascendant/descent | Very brief | Struggling | Much effort | Some effort | Little effort | With ease | Floating/effortless |
| Stability | Lose balance | Unstable | Variable | Stable | Sure | Confident | Relaxed/bold |
| Change of position | Awkward | Discontinuous | Labored | Controlled | Smooth | Flowing | Effortless |
| Rotation technique | Awkward/very slow | Unstable, scraped turns | Discontinuous weak turns | Continuous | Smooth | Flowing and fast | Flowing and very fast |
| ASPECTS | VERY POOR | POOR | MEDIOCRE | ACCEPTABLE | GOOD | VERY GOOD | OUTSTANDING/ EXCELLENT |
| CHOREO LIFT | -3 | -2 | -1 | Base | +1 | +2 | +3 |
| Entry/exit | Shaky/dropped | Fumbling | Hesitant/abrupt | Sure/ solid | Smooth | Flowing | Seamless |
| Ascendant/descent | Very brief | Struggling | Much effort | Some effort | Little effort | With ease | Floating/effortless |
| Music | Not coherent with the music and choreography | No choreographic reason Poor in originality | Good but meaningless | Some coherence with the music and choreography | On the music | Coherent with the theme and the choreography Original | Absolutely in the flow of the music and on the meaning of the theme, originality |
| ASPECTS | VERY POOR | POOR | MEDIOCRE | ACCEPTABLE | GOOD | VERY GOOD | OUTSTANDING/ EXCELLENT |
| CHOREO POSE | -3 | -2 | -1 | Base | +1 | +2 | +3 |
| Execution | Shaky/dropped | Fumbling | Hesitant/abrupt | Sure/ solid | Smooth | Flowing | Seamless |
| Music | Not coherent with the music and | No choreographic reason | Good but meaningless | Some coherence with the | On the music | Coherent with the theme and the | Absolutely in the flow of the music and |

| | | | | | | | |
|---|---|--|---|---|-------------------------------|--------------------------------------|--|
| | choreography | Poor in originality | | music and choreography | | choreography Original | on the meaning of the theme, originality |
| ASPECTS | VERY POOR | POOR | MEDIOCRE | ACCEPTABLE | GOOD | VERY GOOD | OUTSTANDING/ EXCELLENT |
| STEP SEQUENCES | -3 | -2 | -1 | Base | +1 | +2 | +3 |
| Edges/sureness | Very flat and shaky | Generally flat and hesitant | Some flats and variable stability | Shallow but stable | Good curves and secure | Strong, confident | Deep and bold |
| Speed and flow | Struggling, labored, forced | Deteriorates or limited | Inconsistent /variable | Some speed and some flow | Good speed with variable flow | Considerable speed and constant flow | Considerable speed achieved effortlessly and fluidly |
| Partner balance | Both very poor | Both poor | Unequal | Differ slightly | Both good | Both very good | Both excellent |
| Footwork | Both on two feet or both toe-pushing Just in one part of the sequence | Wide stepping or one on two feet or toe-pushing Just in one part of the sequence | Variable Mostly in one part of the sequence | Generally correct And correctly distributed | Correct | Clean and neat | Clean and effortless |
| Turns | Jumped/ awkward | Skidded | Forced | Majority correct | Clean | Clean and neat | Clean and effortless |
| Spacing between partners (not touching) | Uncontrolled | Deteriorates | Variable | Little variation | Controlled | Consistent and close | Consistent and very close with ease |
| Timing | 40% or less | 50% clean | 60% clean | 75% clean | 80% clean | 90% clean | 100% |
| ASPECTS | VERY POOR | POOR | MEDIOCRE | ACCEPTABLE | GOOD | VERY GOOD | OUTSTANDING/ EXCELLENT |
| SYNCHRONIZED CLUSTERS | -3 | -2 | -1 | Base | +1 | +2 | +3 |
| Entry/completion | Awkward/ off balance | Hesitant/ lack of control | Abrupt | Sure/stable | Sure and smooth | With ease | Seamless |
| Footwork | Completely uncontrolled | Some lack of control and wide stepping | Labored/ variable | Sure/clean | Smooth/ neat | Very good and stylish | Clever and exquisite |
| Edges | Very flat and shaky | Generally flat and hesitant | Some flats and variable stability | Shallow but stable | Good curves and secure | Strong confident | Deep and bold |
| Spacing between partners | Completely uncontrolled | Deteriorates | Variable | Little variation | Consistent | Consistent and close | Consistent and very close |
| Synchronization | Absolutly missing | Some moments | Variable | Correct | Correct and lines matching | Perfectly matching | Like one skater |
| Musicality | No musicality | Poor in musicality | Some musicality | Moderate musicality. | Good musicality | Very good musicality | Clever and exquisite |
| ASPECTS | VERY POOR | POOR | MEDIOCRE | ACCEPTABLE | GOOD | VERY GOOD | OUTSTANDING/ EXCELLENT |
| TRAVELING SEQUENCES | -3 | -2 | -1 | Base | +1 | +2 | +3 |
| Entry/ Completion | Awkward/ off balance | Hesitant/ lack of control | Abrupt | Sure/ stable | Sure and smooth | With ease | Seamless |
| Connecting steps footwork | Completely uncontrolled | Some lack of control and | Labored/ variable | Sure/ clean | Smooth/ neat | Very good and stylish | Clever and exquisite |

| | | | | | | | |
|--------------------------|-------------------------|--|---------------------|--------------------------------|----------------------------|--------------------------------|-------------------------------------|
| | | wide stepping | | | | | |
| Spacing between partners | Completely uncontrolled | Deteriorates | Variable | Little variation | Consistent | Consistent and close | Consistent and very close |
| Rotational speed | Very slow | Slow | Variable | Normal | Good | Fast | Very fast |
| Synchronization | Absolutly missing | Some moments | Variable | Correct | Correct and lines matching | Perfectly matching | Like one skater |
| Position of the free leg | Completely uncontrolled | Some lack of control and aesthetically wrong | Aesthetically wrong | Controlled and basic positions | Good control and position | Very Good control and position | Clever and very controlled position |

Clarifications

- Falls: in addition to the deduction to the sum at the end of the program, the judges should apply a negative QOE like this: -2 for the fall of one (1) skater, -3 for the fall of two (2) skaters.
- For compulsory dance: if the skater changes (i.e. does not attempt the correct execution of the step as described in the dance book and replaces it with any other step) the judges must give negative QOE.
- For footwork sequences turns and/or steps must be distributed throughout the sequence. There should be no long sections without turns or steps. If not, the judges will give negative QOE.

7 PENALIZATIONS

A deduction of one point (1.0) (unless otherwise specified) will be applied to the sum of technical content and artistic impression each time one of the following is executed:

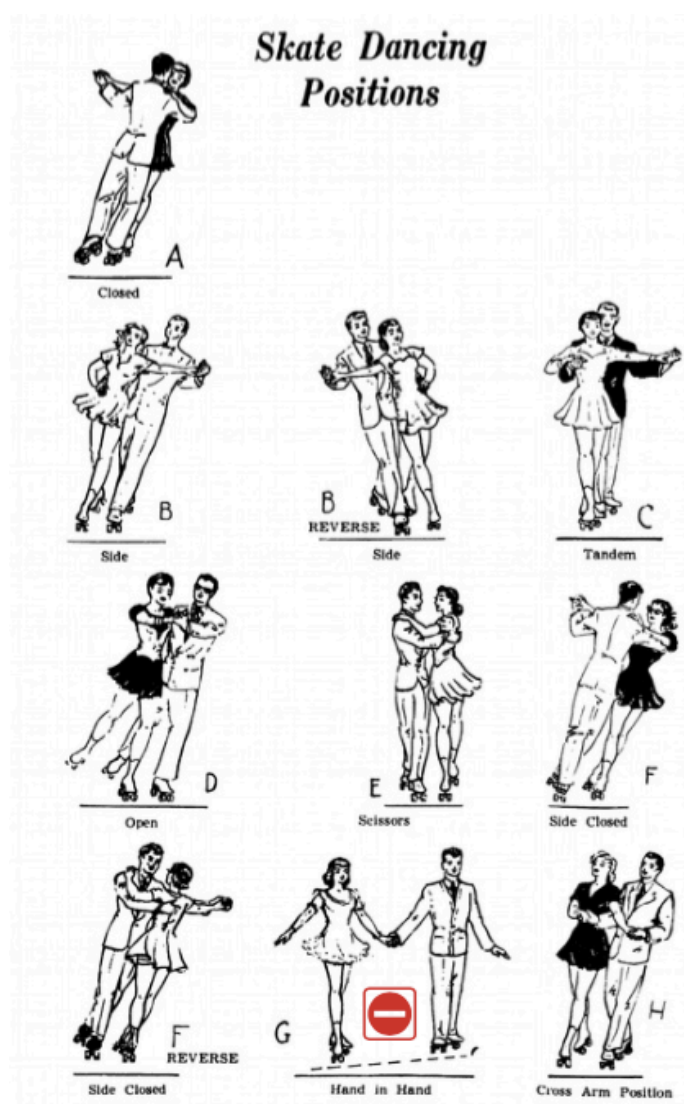
7.1 By the referee

| | |
|--|--|
| Style dance: wrong rhythm, number of rhythms less than two (2), rules on the music for the compulsory dance sequence not achieved. | 1.0 point |
| No correct BPM for the Style Dance Pattern sequence | 1.0 point |
| More than the allowed seperations | 1.0 point |
| More jumps (number or rotations) or dance spins than allowed. | 1.0 point |
| Kneeling or laying on the floor more than twice or more than maximum five (5) seconds (including beginning and end). | 1.0 point |
| Stopping more than twice or more than maximum eight (8) seconds (excluding beginning and end) or being seperated more than 4m during a stop. | 1.0 point |
| Costume violation (with opinion of judges) | 1.0 point |
| Time of the program less than the minimum | 0.5 point each 10 secs or part thereof |
| The time from the start of the music and the first movement is more than 10 seconds | 0.5 point |
| Compulsory dance: the number of opening beats to be used for all dances must not exceed 24 beats of music. | 0.5 point |
| Music with inappropriate or expletive lyrics in any language | 1.0 point |
| Fall of one skater | 1.0 point |
| Fall of two skaters | 2.0 points |

7.2 By the technical panel

| | |
|---|-----------|
| Missing mandatory element | 1.0 point |
| Illegal elements | 1.0 point |
| Compulsory dance: the number of opening beats to be used for all dances must not exceed 24 beats of music | 0.5 point |

APPENDIX 1 - recognized couple positions



- A. Waltz
- B. Kilian/Kilian Reverse
- C. Tandem
- D. Foxtrot
- E. Promenade
- F. Tango
- G. Hand in hand
- H. Cross arms

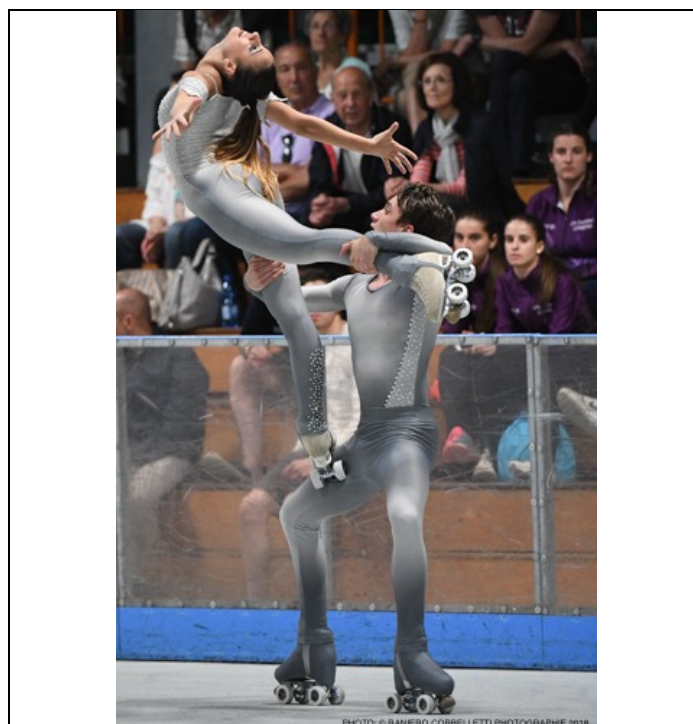
APPENDIX 2 - examples of difficult positions for the lifted partner

Examples given in the images are to demonstrate a correct example of the difficult position. Note: the holds used in the pictures could be incorrect.

A. Full ring.



B. Cantilever.



APPENDIX 3 - examples of difficult positions of the lifting partner

Examples given in the images are to demonstrate a correct example of a difficult position.
Note: the holds used in the pictures could be incorrect.

A. Outside, inside or flat spread eagles.



APPENDIX 4 - Traveling features examples

Elbow(s) at least at the same level or higher than the shoulder (hand(s) could be above the head, at the same level as the head, or lower than the head).



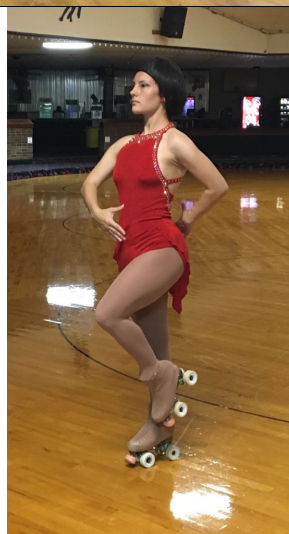
Clasped hands behind the back and far from it.



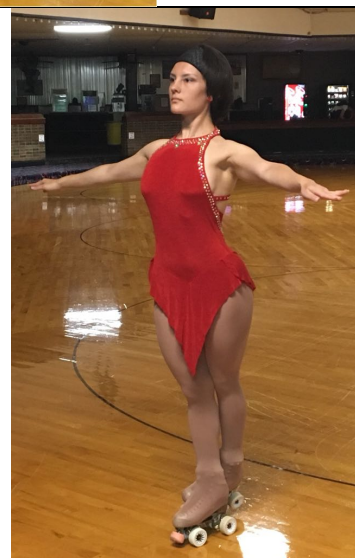
Straight arms clasped in front & extended away from the body (between the waist and chest level and lower than the level of shoulder).



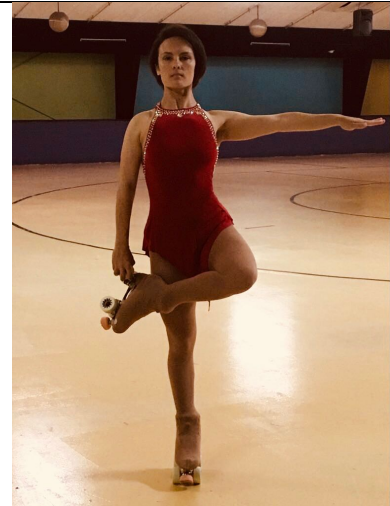
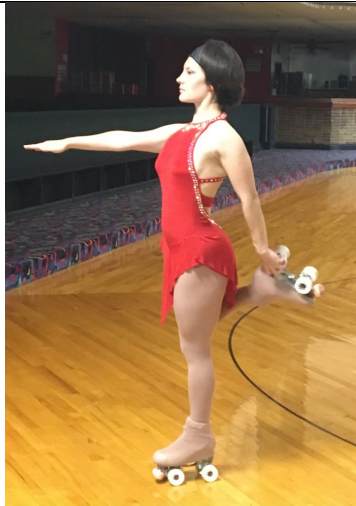
Arms: one behind and the other in front like a screw.



Free leg crossed in front or behind under the knee line (pirouettes).



Free skate wheels held by one hand.



High free leg stretched lateral or forward (at least 45-degree angle from the vertical).



APPENDIX 5 - TECHNICAL PANEL ROLES (PROTOCOL) AND GUIDELINES

- Members of the Technical Panel (TP) must be focused on their respective task during the program.
- Talking is not allowed during the program, this can confuse the Data Operator and also the other people of the Technical Panel.

Technical Specialist (TS)

- Says “*Start*” with the first movement of the skater(s).
- Calls the elements.
- Calls the falls.
- Calls review “*Review on ...*” if the TS wants to be assured on the call.
- Calls the start of the elements and at the end calls the level (or confirm it for elements with fixed values).
- Says “*Stop*” when the program ends.
- Does not have any paper and does not write anything, his/her concentration is all the time on the rink.

Assistant (AS)

- Pre-calls the elements and the time it is due to start based on the list provided with the order.
- Has a copy of the program element content sheets and writes down the calls of the TS.
- Requests a “review” firstly.
- If the AS wants a review, writes down next to the TS call an ‘R’ and the element he/she would call.
- Writes down all the details of the element, for example: the features on the elements.
- Helps to double check the elements inserted in the system during the manual checking with the Controller and Data Operator.

Controller (CTR)

- In general, does the same as the TS.
- Has a copy of the program element content sheets and writes down the calls.
- If the CTR wants a review, writes down next to the TS call an ‘R’ and the element he/she would call.
- Calls “review” with no other comment after the call of the TS and after waiting for the AS to do it first.
- Times the elements using a stopwatch. Starting the stopwatch when the specialist calls ‘*start element*’ and calling ‘*time*’ when the maximum time is reached.
- At the end of each program, goes through the reviews first.
- Once everything is decided, checks the elements inserted in the system with the Data Operator.
- Writes down all the details of the element, for example: the difficult positions on the lifts (couples), the features.

Data Operator (DO)

- Before the competition starts, checks the connections on the judge’s monitors and on the Technical panel monitor. If time permits, the DO can do a test with a competition of one or two skaters.
- Clicks on ‘Start’ and “Stop” when the TS calls it.
- Inputs the elements, the levels and the falls called by the TS.
- Five (5) seconds before the element is due to begin, enters it into the system so the judges know the start of the element.

- Selects the ‘Review’ button for each element that the TS asks to be reviewed.
- For the first skater before going through the elements, clicks the Average button and the referee approves and confirms it; so, the DO sends the average to the judges.
- At the end of the performance, reads the list of the elements so that the CTR, the AS and the referee can double check.
- After checking the elements, if the system does not automatically exclude an element because it is not accepted by the rules, the DO must highlight the element and press the * button.

Referee (Ref)

- Checks the average of the components of the first skater(s) and can change them.
- Checks number of elements, time of elements (as required), time of programs and costume.
- Confirms the falls and has the last word if there is a doubt on a fall called by the TS.
- Does not give any opinion on the discussion between the TP unless the TS asks for it.

GENERAL PROCEDURE FOR TECHNICAL PANEL

To evaluate a program, the procedure for the TP is as follows:

- Pre-calls and calls.
- Request and visualize reviews.
- Data input.
- Checking.
- Confirmation.

In this document, when some sentences are capped with quotes and italicized (for example: “*Cluster Sequence*”) that refers to the oral formula that should be used by the TP.

Pre-calls and calls

Pre-Calls

- It is the act of announcing the group of the element that the skater will execute next. These pre-calls will be listed in order on the program element content sheets.
- Pre-calls will be made after the previous item has been completed and after verifying that no review has been requested.
- For the first element, the pre-call is made after the start of the program once the TS has announced “*Start*”.
- When the program element content sheet has not been delivered it is recommended that the TS anticipate (as far as possible) the group of the element the call belongs. This will help the DO’s function.
- When the program element content sheet does not match the order of execution of the elements, it is recommended to stop making the pre-calls.

The groups of items that should be pre-called and the acronym they have on the program element content sheets are the following:

| ELEMENT | ACRONYM |
|--------------------------|----------------------|
| Pattern dance sequence | Depends on the dance |
| No hold cluster sequence | ClSq |
| Hold cluster sequence | HClSq |

| | |
|---------------------------|-------|
| Traveling sequence | Tr |
| Hold footwork sequence | Ho |
| Choreographic sequence | ChSt |
| Combo lift | CliLi |
| Stationary lift | StLi |
| Rotational lift | RtLi |
| Choreographic lift | ChoLi |
| No hold footwork sequence | NoH |
| Choreographic pose | ChP |

There are some ways to make a pre-call:

- “*First Element ... Combo lift*”.
- “*Next element... Cluster sequence*”.

Calls

This is the validation of an element by the TS. It may be complete, partial, increased or devalued, in accordance with the provisions of the regulations. The action of validating an item will therefore be known as “calling”.

The TP will call the start of the element and begin to count in accordance to the time as transcribed on the program element content sheet or once the TS recognises that the sequence has begun. The TS will stop calling when the CTR calls ‘*Time*’ or when it is evident that the element is complete and a transition to another element has begun.

In regard to the timing: the TP will allow anywhere up to and within the maximum seconds. For example, for up to 40 seconds, it will be accepted anywhere up to 40.59sec.

Pattern dance sequence

To call the pattern dance sequence:

For compulsory dances the specialist will call “*start*” at the first movement of the skater.

For compulsory and style dance: “*start sequence*” (when the step number 1 is executed) + “yes” (correct execution of the KP) / “no” (not correct execution of the KP) for each one of the four (4) key points of the first sequence + “*level xx*” + “yes” (correct execution of the KP) / “no” (not correct execution of the KP) for each one of the four (4) key points of the second sequence + “*level xx*”.

- KP for man or lady performed separately can be called by the TS.
- KP where both the man and lady perform the same steps can be called by the TS.
- When two KP with different steps/turns are performed simultaneously by the man and lady: The Key point for the man is called by the TS and the KP for the lady is called by the Assistant.

Note: to confirm a KP, all of the KP must be confirmed, this means turns, edges, timing, number of beats and location on the pattern.

| PART OF THE CALL | DETAILS |
|------------------------|--|
| Number of the sequence | <ul style="list-style-type: none"> • 1 • 2 |

| | |
|-----------------------|--|
| Key points executed | <ul style="list-style-type: none"> • Yes • No |
| Level of the sequence | <ul style="list-style-type: none"> • NL • 1 • 2 • 3 • 4 |

Examples

- QSS1L1: “sequence 1, Yes, No, No, No, Level 1”
- TDS2L3: “sequence 2, Yes, No, Yes, Yes, Level 3”

Footwork sequence

Footwork sequence: start + level.

The start is called: “*start element*” or “*start footwork*” (if no pre-call it might be helpful to use the name of the element). At the end, the level is called: “*level ...*”.

During the element, it is best not to call each turn so as not to confuse the rest of the panel. The first step is to organize with your TP who is going to check what. In general, the Specialist counts the turns of the man and the Assistant counts the turns of the lady.

For the features, the TP calls the feature + confirmed.

Whatever the method chosen, it should be consistent and communicated with the DO and the TP prior to the beginning of the event/competition.

| TURN/FEATURES | ACRONYM |
|-------------------------------------|---------|
| Counter | Ct |
| Rocker | Rk |
| Bracket | Bk |
| Three turn | 3t |
| Loop | Lo |
| Travelling | Tr |
| Choctaw | Cw |
| Right / clockwise | R |
| Left / anti clockwise | L |
| Body movement | BM |
| Cluster | Cl |
| Different feet | DF |
| Different holds (couple Hold Sq) | C / NC |
| Confirmed | C |
| Not confirmed | NC |
| Fall | X |

| PART OF THE CALL | DETAILS |
|-------------------|---|
| Turns + feet | <ul style="list-style-type: none"> • Three turn (only if it is in a cluster) • Bracket • Counter • Rocker • Left • Right |
| Turns + direction | <ul style="list-style-type: none"> • Loop • Traveling • Clockwise • Anti clockwise (anti) |
| Features | <p>Will be called once the characteristics are achieved. For example, 2 Choctaws are performed, from forward to backwards, one clockwise and the other anti clockwise; 3 body movements from different groups, etc.</p> <ul style="list-style-type: none"> • Choctaw • Body movements • Cluster • Different feet • Number of different holds |
| Confirmation | <ul style="list-style-type: none"> • Confirmed: the turn / feature meets the mandatory characteristics to be confirmed. • Not confirmed: the turn / feature characteristics / required number have not been reached. |

Choreographic sequence / Lift / Pose

Choreographic sequence: start + confirmed/not confirmed.

The start is called: “*start element*” or “*start choreo*” (if no pre-call it might be helpful to use the name of the element). At the end, the element is confirmed or not confirmed with the oral transcription: “*choreo confirmed*”.

Cluster sequence

Cluster Sequence: start + level.

The start is called: “*start element*” or “*start cluster*” (if no pre-call it might be helpful to use the name of the element). At the end, the level is called: “*level ...*”.

During the element, it is possible to confirm the features and call the turns, but be consistent, if you start to do it, do it for all programs and the whole competition.

Traveling sequence

Traveling sequence: start + level.

The start is called: “*start element*” or “*start traveling*” (if no pre-call it might be helpful to use the name of the element). At the end, the level is called: “*level ...*”.

During the element, it is possible to confirm the features and count the rotations, but be consistent, if you start to do it, do it for all programs and the whole competition.

Lifts

Lift (stationary, rotational, combination): start + level.

The start is called: “*start element*” or “*start lift*” (if no pre-call it might be helpful to use the name of the element). At the end, the level is called: “*level...*”.

During the element, it is possible to confirm the features, count the rotations, count the seconds, but be consistent, if you start to do it, do it for all programs and the whole competition.

To avoid confusion during the program, as a general rule, if the TS calls the features performed, the CTR will notify if any of them has already been used with the oral transcription: “*used*”. This will be useful for the panel to understand which features count toward the level and which do not.

Request and visualize reviews

- The request for a review must be made in order to avoid overlapping. First, the AS can ask for a review and then, if not requested, the CTR can do it if he/she has doubts or if the AS calls review on a particular part of the element and the CTR wishes to review a different part.
- To request a review, it is necessary to wait until the skater finishes the item and it must be called before the next element is pre-called.
- The reason for the review and the affected part of the element should be called.
- When there is a doubt in the identification of an element, the review must be requested for the whole item “*for the calling*”.
- No other comments are allowed. The discussion about the reviews will be at the end and not during the program.

Examples:

- “*Review on rotation lift for number of revolutions of the man*”
- “*Review on cluster sequence for difficult entry*”
- “*Review on pattern dance sequence 1 for timing*”
- “*Review for the calling*”
- “*Review for checking body movements*”.

Managing the reviews

The CTR manages the reviews. Therefore, once the program is finished, he must indicate the Video Operator the number of the element, the affected area, the reason, and the speed to be used. The assistant will also be able to specify the review speed if it is required slower or faster.

Example: “*element number 3, review on the second set of the cluster sequence for the turns, normal speed, please.*”

Rules to visualize the reviews

- Only the part of the element where the review has been requested may be reviewed and therefore it can be changed, the call of any previous or subsequent elements cannot be modified, even if the visualization of the video reveals other incorrect calls.

- It is not allowed to identify an error not previously warned during the review. For example: traveling with a review for three turns, cannot end up being a review on number of revolutions, unless it was announced during the program.

Speed for the reviews

- *Normal speed.*
- *Slow (50% of the normal speed).*
- *Very slow (20% of the normal speed).*

The speed to be used for the reviews, according to the type of element, will be:

- Frame by frame revisions cannot be performed.
- All the elements in dance: *normal speed.*
- Falls: normal speed.
- Full calling: normal speed.

Data input

The data input will be done in specific boxes assigned to each item group that will be pre-called by the AS. Each group of boxes has an area assigned on the computer screen to which the DO will direct the mouse when the pre-call is made.

- During the program, the DO will enter the elements as these have been called. However, there is the possibility that a pre-call does not correspond to the element group that the skater performs. In this case, the TS or the CTR must correct such pre-call. Example: when a pre-call is ‘combo lift’ but the skater performs a ‘rotational lift’, and there is no correction on the group of element, the CTR must alert the DO pointing on the screen in the correct box group or saying "*this is a rotation lift*".
- The DO, with assistance from the CTR, should enter the dance element five (5) seconds prior to when they are deemed to begin according to the content sheet, so the judges can be informed of the element starting.

Checking and confirmation

This is the last part of the TP scoring process before the program results are displayed. It consists of a detailed reading out loud of all the elements inserted by the DO. The CTR, the TS, and the AS will listen carefully.

Recommended way to read the elements to avoid possible data input errors:

- a. Box number: "*one*"
- b. Item group: "*cluster sequence*"
- c. Element called with level or confirmation: "*traveling sequence level 2*" or "*choreographic sequence confirmed*".
- d. Possible cancellations of the box (*) which are indicated in the rightmost column.

Once the reading is complete, the Ref applies the penalties and confirms the falls.

Finally, the CTR gives the order to press "Confirm". The system applies the particularities of the rules and eliminates what is not confirmed.

It is necessary to check the automatic warnings made by the system and modify the * if needed. If this does not correspond to the rules or what the TP or the Ref said, the DO must press the "stop" immediately to solve it. For this reason, it is recommended to ask

the judges to wait five (5) seconds since the "elements authorized" signal appears on their screen until they press, "send marks".

SPECIFIC PROCEDURE FOR COMPULSORY DANCE

Procedure used to deal with irregularities in the bpm

The revision of the BPMs will be carried out during the warm-up with music. In order to do this, the Ref will use chronometer to minute (assign a time code) each one of the elements in such a way that it had the precise moment in which the Pattern Sequence started and ended. Thus, during the first five minutes of the warm-up time of the next group, the fragment will be extracted with the AUDACITY program and analyzed with BPM Analyzer. When not correct situations arise, referee will double check manually.

SPECIFIC PROCEDURE FOR STYLE AND FREE DANCE

- If a mandatory element is omitted or it has not even been attempted, the skater will be penalized by the TP for "missing mandatory element".
- All items executed after the program maximum time is reached will be called by the TP but if the Ref blows their whistle, the elements called afterwards will be invalidated with symbol (*). This is a Ref task, so it will be done manually during the Referee's speaking time during the checking.
 - If the all element was performed out of time limit: CIS*.
 - If a part of the element was performed out of time limit, the TP have to stop counting features and give the level based on the executed before the end of the time.

TECHNICAL SPECIFICATIONS FOR CLUSTER SEQUENCE

A cluster sequence is made up of two sets of a minimum of three (3) one foot turns per set executed on the same foot where the exit edge of one turn is the entry edge to the next. The skater is allowed 4 steps or two feet turns between the two sets of cluster that make up the Sequence.

- No change of edge is allowed in the first three turns of the cluster.
- Turns to be confirmed, must show clear edges before and after the change of direction and cusps must be clear. Jumped turns or turns executed on the spot will not be counted.
- If a loss of control with additional support (touch down by free leg/foot and/or hand/s) occurs after the cluster has started and the execution of the element continues after the touch down, only the part before the touch down will be considered for the level.
- If the skater executes a turn during the 4 steps allowed in between the two sets in the cluster the technical panel will consider it the start of the second set.
- If the time limit is reached the technical panel will stop counting and will consider only what was performed within the time allowed.
- Technical Panel is **not allowed** to review the cluster element in slow motion.

Cluster features

As a general rule the features need to be confirmed by both partners to be granted.

Difficult entries: for the feature of difficult entry to be confirmed the position must have a significant impact on the balance, control and execution, so that in effect, it makes the element more difficult to achieve. If there is a change of foot, prolonged rolling on one

or two feet or other correction of balance between the difficult position and the commencement of the cluster the difficult entry will not be confirmed.

- The difficult entries must precede immediately the first turn of the set. In the second sequence, the difficult entry must be the step preceding the first turn of the second sequence and will be counted as the final of the four steps allowed. The difficult entries will be considered as part of the time limit.
- Spread Eagles/Ina Bauer as difficult entries must maintain the characteristics of the step until the entry of the first turn of the set, otherwise the feature will not be considered. It is not possible to execute a change of edge before the first turn.
- Difficult entries do not have a 'time' that they must be held, but they must be clearly recognizable by the technical panel.
- The difficult entries must be different means that both man and lady cannot perform the same difficult entry in the two sets.
- The two partners must execute the same difficult entries as each other for no hold cluster, however for the hold cluster they may be different.
- Jumps and assisted jumps must be very clear to be considered as difficult entries and the turns of the set must begin immediately after the edge is taken.

Body movements: it is necessary for both the man and the lady to present a confirmed body movement in each set for the feature to be granted.

- They cannot be executed at the end or at the beginning of the sets, they must be executed during or between the turns.
- They must be from different groups a-f as outlined in the Artistic Impression document.

Different feet:

- One set must be executed on the right foot and one set on the left foot.
- For loops and travelings in the cluster, rotational direction is not important, rather the right or left foot.

Reasons to reduce the level of the cluster

The technical specialist may reduce the level of the call by one (1) in the following circumstances:

- If there is a full stop before the second sequence.
- If there are more than four (4) steps between the two sequences.
- Pushing with toe-stop by either skater to gain speed during the four steps-turns allowed in between set.
- If the skater/s executes more turns than required for the maximum level of the category.

Note: regardless of the number of cumulative errors noted above, the Technical Panel cannot reduce the element lower than level Base.

7.3 Cluster sequence "No Level"

A cluster sequence is to be called no level if the technical specifications are not met, reasons for a cluster to be called no level:

- A cluster with change of edge between the first 3 turns.
- A cluster with less than 3 turns executed on each set.
- A cluster where the same turns are repeated in the same order in both sets regardless of the foot, edge or direction they are executed.
- In hold cluster: if the partners break hold during the execution of either set.
- In no hold cluster: if the skaters attempt different turns from each other (if in mirror formation, the turns should be mirrored as far as the foot and rotational turning direction is concerned but the 'type' of turn attempted should not be different).

TECHNICAL SPECIFICATIONS FOR TRAVELING SEQUENCE

A Traveling Sequence is made up of two sets of rapid, continuous, multirotational one-foot turns. Each set is minimum of two (2) rotations (720 degrees) with a maximum of three (3) steps or turns in between.

- If the skater falls, there is any interruption or loss of control with additional support (touch down by free leg/foot and/or hand/s) during the entry, the execution of the sequence or immediately after either set, the element is called for what has been done before the interruption or the fall. It will have a no level if the features of level base are not fulfilled.
- If the skater executes more revolutions than required by the maximum level of their category, the turns in excess will be considered in counting the three steps/turns they are allowed in between the two sets. $\frac{1}{2}$ a revolution in excess is accepted as an entry into each set to reach the position of the feature. In the second set, or the last set if the feature 1c is executed, $\frac{1}{2}$ a revolution in excess is accepted as an exit from the element.
- Turns and connecting steps will be timed as part of the allowed time. All the features and turns done after the maximum time is reached will not be counted for the level. The controller will time the sequence and call 'time' when the maximum time is reached.
- Features from Group 2 or Group 3 can be presented during the third set of traveling (Group 1 - c). One of these additional features may be included in the features to get the level.
- For traveling Level 4: If the skater attempts the level 4 but only achieves three features then the traveling level will be Level 3 even if the the three features confirmed are not from different categories. For example, if the skater attempts DE, Arm feature, Leg feature, Arm feature and the Leg feature is not confirmed, the technical panel will give the Level 3 even though the three features confirmed don't come from different categories.
- If the skater presents feature 1c - Third traveling set. Any two of the three sets must include four revolutions to be awarded Level 4.

Traveling features

- Features should be performed correctly and for the entirety of the set to be considered and must be different to be counted towards the level.
- Skaters can use the first half revolution to reach the position required by a feature; this half revolution will be counted on the total number of revolutions.

Difficult entries: difficult entries must immediately precede the entry of the traveling.

- The feature difficult entry is to be considered just for the first set.
- Spread Eagles/Ina Bauer as difficult entries must maintain the characteristics of the step until the entry of the first turn of the set.
- If there is a change of foot, prolonged rolling on one or two feet or other correction of balance between the difficult entry and the commencement of the traveling the difficult entry will not be confirmed.
- Difficult entries do not have a 'time' that they must be held, but they must be clearly recognizable by the technical panel.

Reasons to reduce the level of the Traveling

The technical specialist may reduce the level of the call by one (1) in the following circumstances:

- If one (1) of the sets is not correct (e.g. evident execution of three turns) but the rotations and/or features have been performed, the traveling sequence will be called with one (1) level less (e.g. if it was a level 3, it will be called level 2). If two (2) of the sets are executed with clear three turns then the level will be no higher Level Base.
- If there is a full stop in between the sets.
- Pushing with toe-stop during the three steps-turns allowed in between set.
- If there are more than three (3) steps/turns between the sets.
- If there are excess rotations. Reduce one level per ½ rotation in excess.
- If there are features presented from more different groups than required for the maximum level of the category.

Note: regardless of the number of cumulative errors noted above, the TP cannot reduce the element lower than level Base.

7.4 Traveling sequence “No Level”

A traveling sequence is to be called no level if the technical specifications are not met. Reasons for a traveling to be called:

- A traveling with less than 2 revolution in any or both sets.
- A traveling on 2 feet.

TECHNICAL SPECIFICATIONS FOR LIFTS

Counting the revolutions

The total number of revolutions of a lift are counted according to the revolutions of the man, from the point where the lady is lifted from the skating surface until the point she is placed back onto the surface. Rules regarding counting of revolutions are as follows:

- If the man is in a spread eagle or Ina Bauer position during the take off the number of revolutions will be counted according to the leading foot at the moment the lady leaves the surface.
- For stationary and combination lifts: It is allowed for the lifting partner to do a half rotation to enter and a half rotation to exit the lift.
- It is allowed, during the stationary lift, to execute a half rotation of the lifting partner to change position.

Lifts features

Each type of difficult position/entry, both for the lifting partner and the lifted partner, will be considered just once in the same lift and in the same program.

Example 1: Man uses a spread eagle as a difficult entry and then keeps or repeats the spread eagle as a difficult position it will be only considered once. The first execution of the position will be the one counted for the level, therefore it will be called as a difficult entry and cannot be used anymore.

Example 2: Man does a Lift in squat position and then lady does next Lift, as a lifting partner, in the same position. Only the first execution will be counted for the level.

Positions required for the levels will be considered from when the position is clear and defined and must be held for the required number of seconds to be confirmed.

The calling of the features of the lift requires team work from the panel. It must be decided by the TP prior to the commencement of the competition who will check the items during lifts (time/number of rotations/supports) etc and the protocol for doing so communicated to the Data Operator.

Change of Position: The Change of Position feature may be granted in accordance with the following specifications:

- The lifted partner changes hold and position in a significant way.
- The change of hold and position are executed at the same time.
- Different positions must be clear and defined.
- In a stationary lift: if either position is not confirmed (time or correctness) the COP will not be confirmed.
- In a rotational lift: if either position is not held for at least two revolutions the COP will not be confirmed.
- In a combination lift the COP between the stationary and rotational parts will not be considered as this is a mandatory change of position. The COP feature will be called only WITHIN the stationary part or WITHIN the rotational part. If executed in the stationary part each position must be 2 seconds or if executed in the rotational part each position must be held for at least two revolutions or the COP will not be confirmed.

Change of hold means that the contact area is different.

Examples: holding with the legs to hold with arms (or vice versa); holding with one arm to hold with the opposite arm.

Different position means the body pose and the body axis change in a significant way. Merely changing the position of arm(s) and/or leg(s) do not constitute a “Change of Position” feature.

Example: the woman changes the plane of the body axis (vertical to horizontal or vice-versa).

Rules regarding awarding of other features if COP is not confirmed:

In a stationary lift: If attempting the COP and one of the two positions are not confirmed, the confirmed difficult position/s will be counted toward the level even if the position/s is only held for two (2) seconds.

In a rotational lift: If attempting the COP and one of the two positions are not confirmed the confirmed difficult position/s will be counted toward the level even if the position is only two rotations.

Difficult position for the lifted partner: for this feature to be granted the difficult position must be correctly executed and not exceed the number of allowed supports as described in the positions listed a-i. The number of seconds/revolutions as specified by the type of lift must be met for confirmation of the feature.

Each type of difficult position for the lifted partner can only be considered once per program regardless of if it is the man or lady being lifted. The first attempt will be the one considered as confirmed or not confirmed.

Difficult position of the lifting partner: for this feature to be granted the difficult position must be correctly executed. The number of seconds/revolutions as specified by the type of lift must be met for confirmation of the feature.

Each type of difficult position for the lifting partner can only be considered once per program regardless of if it is the man or lady doing the lifting. The first attempt will be the one considered as confirmed or not confirmed.

Creative/difficult entry: for this feature to be granted the creative/difficult entry must immediately precede the elevation of the lifted partner from the skating surface. There should be no preparation or interruption in the pace of the execution of the lift. If there is a long hesitation or delay in reaching the peak position of the lift, the feature will not be considered.

There are four categories of creative/difficult entry being: unexpected entry, difficult transition, assisted jump and rotation. Each type of difficult entry can be considered once per program. The first attempt will be the one considered as confirmed or not confirmed.

For difficult transition: the turn (one foot or Choctaw) must be correctly executed immediately before the lift.

Number of revolutions (rotational lift only): This feature can be awarded if there are six (6) revolutions for the lifting partner. The half revolution in the exit will not be considered part of the revolutions.

Reasons to reduce the level of the lift

The technical specialist may reduce the level of the call by one (1) in the following circumstances:

- If the couple present more features than required for the maximum level of the category.
- A stationary lift where the couple executes more than the ½ rotations allowed to enter, change position and exit the stationary position the level will be no higher than BASE.

Lift “No Level”

A lift is to be called no level if the technical specifications are not met, reasons for a lift to be called no level include but are not limited to:

- A lift where the lift fails in the take-off and the woman does not get her position.
- When the partner is lifted in the air for less than two (2) seconds.
- Rotational: a lift of less than the minimum three (3) revolutions.
- Stationary: a lift of less than the minimum three (3) seconds.
- Lifts at the beginning of the program when the lifted partner is already lifted.
- Lifts at the end of the program where the lifted partner does not exit the lift.
- A lift where the lifting partner’s hands are above their own head and the hips of the lifted partner are also above the partner’s head.

TECHNICAL SPECIFICATIONS FOR FOOTWORK SEQUENCE

Technical panel protocol during the footwork sequence

- **TS:** calls the start of the sequence with the formula “*start element*”. During the development of the element the TS count the number of turns performed **by the man** and the foot/direction in which they have been executed without calling them orally so as not to confuse the rest of the panel. If one turn is confirmed, it will be counted on one hand or another (as appropriate) but if not confirmed it will not be marked. If a skater executes the same turn three times and all three are confirmed, only the first two will be considered. In addition, the TS will call the “cluster” as soon as it is seen with the oral code: “*cluster confirmed*”. At the end of the element the TS will call the level of the man considering the contributions that CTR can make about the features they have to monitor during the item.
- **AS:** will call the start of the element if the TS has not. During the execution of the item, the assistant must count the number of turns performed **by the lady** and the

foot/direction in which they have been executed. The AS will call the "cluster" as soon as it is seen with the oral code: "*cluster confirmed*". At the end of the sequence if the level of the lady is lower than that of the one of the man called by the specialist the assistant will call the level for the woman with the oral code: "*level x for the lady*".

- **CTR:** activate the stopwatch at the same moment the TS calls the start of element. The CTR will check the presence of body movements, choctaws and holds and will confirm the features as they are presented with the oral code '*body movements confirmed*', '*choctaws confirmed*' and '*holds confirmed*'. When the stopwatch has exceeded the time allowed, the CTR will announce it with the oral code: "*time*". At that point, the footwork sequence will stop being evaluated.

Confirming turns

Turns that can be counted towards the level are: rockers, counters, brackets, loops, and travelings except in Tots where the turns/steps that can be counted towards the level are: inside three turns, outside three turns, open mohawks, and cross in front. To be confirmed and counted towards the level the following must be met:

- Turns/Steps must be recognizable, executed correctly and on clear and correct correct entry and exit edges.
- Jumped turns will not be counted.
- Turns executed on the spot will not be counted.
- Each type of turn/step can only be counted twice.
- If the skater puts the free leg on the floor during or at the exit of a turn, this turn will not be counted.

Footwork features

As a general rule the feature needs to be confirmed by both partners to be granted.

Body movements: it is necessary for both the man and the lady to present three confirmed body movements for the feature to be granted.

- The three body movements presented must come from different categories a-f as outlined in the Artistic Impression document.
- Body movements performed at the beginning or end of the sequence whilst the skaters are stationary are not to be considered.
- The body movements should be spaced throughout the sequence with at least one (1) step or turn in between. Body movements presented one after the other are to be counted as one movement, and in this case the category of the movement can be determined as the one that favors the skaters for confirmation of the feature.

Choctaws: both skaters must have confirmed (2) Choctaws.

- One Choctaw must be clockwise and the other anti-clockwise. Rotational direction is determined by the exit edge of the Choctaw.
- Only Choctaws from forward to backward will be considered.

Cluster: for the feature to be granted a cluster for both partners must be confirmed.

- It is not necessary to present three consecutive turns. Example: if the skater performs a cluster with 4 turns and the third is not confirmed but the other three are confirmed then the cluster will be confirmed.
- The clusters confirmed by each partner do not need to be the same.

Different feet: for the feature to be granted it must be confirmed for both partners.

- There must be a balance, depending on the level of the element, in the number of turns made with the right foot or clockwise direction (only for loops and travelings) and the left foot or anti-clockwise direction (only for loops and travelings).
- Example: If a skater executes 4 turns with the right foot/clockwise direction and 3 turns with the left foot/anti-clockwise direction, the feature "different feet" will be considered for level 2, but not for level 4 as they would be needed 4 and 4.
- This feature will not be effective with a 2-2 formula because for level 1, feature type 1 or type 2 (body movements or Choctaws) is mandatory.

Reasons to reduce the level of footwork

The technical specialist may reduce the level of the call by one (1) in the following circumstances:

- If the skaters present more than one extra turn than required for the maximum level of the category.

Note: regardless of the number of cumulative errors noted above, the Technical Panel cannot reduce the element lower than level Base.

Footwork sequence 'No Level'

A footwork is to be called no level if the technical specifications are not met. Reasons for a no level call:

- If the sequence does not cover at least $\frac{3}{4}$ of the skating surface.

PENALIZATIONS

Missing mandatory element

When the skater has not included in his program a mandatory element.

Illegal element

An illegal element is when a skater includes an element that is expressly prohibited in the program.

These elements will be, technical elements not included in the elements of the year of competition and the elements mentioned on chapter 5, limitations.

Example: or the footwork sequence ONLY: one (1) rotation jumps and/or spins are not allowed in this sequence and will be considered an illegal element. If this happens the technical panel will apply a deduction of 1.0.

Opening beats

Compulsory dance: the number of opening beats to be used for all dances must not exceed 24 beats of music.